



## Technical Features



RAL 9016  
standard



Other colors  
on request



Range  
Up to 4,2 m



Heating types  
Heat pump  
R32



Casing  
Galvanised Steel  
Self-Supporting



Airflow / Length  
1640 - 5110 m<sup>3</sup>/h  
1m to 2,5m



Heating capacity  
8 - 27 kW



Grille type  
Micro-perforated with  
pre-filter included



Fans  
EC Double Inlet  
Centrifugal



Control  
Plug&Play Advanced PRO  
+ IR remote control  
(Optional Clever Pro)



Outlet vanes  
Fixed lamellas

RECESSED DAM is an air curtain from the standard range that stands out for its versatility and the design that can be recessed in false ceilings, with a full view of the diffuser grille. The maintenance-free air inlet grille is integrated into a single frame in white, or your choice of colour on request. Its energy saving heat pump compatible version achieves a reduction of up to 70% in consumption and CO<sub>2</sub> emissions (in heating mode). Advanced Plug&Play control. Includes: Advanced PRO control with LCD display and integrated thermostat, door contact, 7m RJ11 cable and remote control. Requires MITSUBISHI ELECTRIC DX Interface KIT adapted for air curtain and programmable control, please consult. Prepared for connection to MITSUBISHI ELECTRIC heat pump (R32/R410A) and expansion valve (not included), to be purchased by the customer. On request, the air curtain can be modified to work in cooling and heating (not recommended) with optional condensate water pump.

### Air curtain specifications

Model	Airflow m <sup>3</sup> /h	Fans power 230V-50/60Hz kW	Fans current 230V-50/60Hz A	Outdoor unit (*) 230Vx1	Outdoor unit (*) 400Vx3	Gas-Liquid pipe connections inch	Noise level (5 m) dB(A)	Weight kg
RDAM ECM 1000 DX8-ME	1640	0,142	1,24	PUZ-ZM71VHA	-	5/8" - 3/8"	56	35
RDAM ECM 1500 DX11-ME	2460	0,213	1,86	PUZ-ZM100VKA	PUZ-ZM100YKA	5/8" - 3/8"	57	53
RDAM ECM 1500 DX13-ME	2460	0,213	1,86	PUZ-ZM125VKA	PUZ-ZM125YKA	5/8" - 3/8"	57	53
RDAM ECM 2000 DX16-ME	3280	0,284	2,48	PUZ-ZM140VKA	PUZ-ZM140YKA	5/8" - 3/8"	58	69
RDAM ECM 2500 DX22-ME	4100	0,355	3,10	-	PUZ-ZM200YKA	1" - 3/8"	59	86
RDAM ECM 2500 DX24-ME	4100	0,355	3,10	-	PUZ-ZM250YKA	1" - 1/2"	59	86
RDAM ECG 1000 DX10-ME	2190	0,213	1,86	PUZ-ZM100VKA	PUZ-ZM100YKA	5/8" - 3/8"	61	50
RDAM ECG 1500 DX14-ME	2920	0,284	2,48	PUZ-ZM125VKA	PUZ-ZM125YKA	5/8" - 3/8"	62	59
RDAM ECG 2000 DX22-ME	4380	0,426	3,72	-	PUZ-ZM200YKA	1" - 3/8"	63	92
RDAM ECG 2000 DX24-ME	4380	0,426	3,72	-	PUZ-ZM250YKA	1" - 1/2"	63	92
RDAM ECG 2500 DX27-ME	5110	0,497	4,34	-	PUZ-ZM250YKA	1" - 1/2"	64	96

(\*) Includes direct expansion valve. PUZ-ZM units with gas R32.

Also compatible with PUZ-M (R32) and PUHZ-ZRP, PUHZ-P, PUHZ-SHW (R410).

### Outdoor unit specifications

Inverter model Outdoor Unit R32	Heating capacity kW	COP or SCOP	Cooling capacity kW	EER or SEER	Voltage	Gas-liquid pipes inch	Minimum pipe length m	Maximum pipe length m	Maximum pipe height m
PUZ-ZM71VHA	8	4,30	7,1	4,39	230Vx1	5/8" - 3/8"	-	50	30
PUZ-ZM100VKA	11,2	4,53	10	4,68	230Vx1	5/8" - 3/8"	-	100	30
PUZ-ZM100YKA	11,2	4,53	10	4,68	400Vx3	5/8" - 3/8"	-	100	30
PUZ-ZM125VKA	14	3,86	12,5	3,95	230Vx1	5/8" - 3/8"	-	100	30
PUZ-ZM125YKA	14	3,86	12,5	3,95	400Vx3	5/8" - 3/8"	-	100	30
PUZ-ZM140VKA	16	3,76	14	3,71	230Vx1	5/8" - 3/8"	-	100	30
PUZ-ZM140YKA	16	3,76	14	3,71	400Vx3	5/8" - 3/8"	-	100	30
PUZ-ZM200YKA	22,4	3,77	20	3,65	400Vx3	1" - 3/8"	-	70	30
PUZ-ZM250YKA	27	3,47	25	3,22	400Vx3	1" - 1/2"	-	70	30

When adverse weather conditions, the outdoor unit capacity can decrease. It is recommendable to oversize the units.



## Technical Features



RAL 9016  
standard



Other colors  
on request



Range  
Up to 4,2 m



Heating types  
Heat pump  
R410a



Casing  
Galvanised Steel  
Self-Supporting



Airflow / Length  
1640 - 5110 m³/h  
1m to 2,5m



Heating capacity  
10 - 29 kW



Grille type  
Micro-perforated with  
pre-filter included



Fans  
EC Double Inlet  
Centrifugal



Control  
Plug&Play Advanced PRO  
+ IR remote control  
(Optional Clever Pro)



Outlet vanes  
Fixed lamellas

RECESSED DAM is an air curtain from the standard range that stands out for its versatility and the design that can be recessed in false ceilings, with a full view of the diffuser grille. The maintenance-free air inlet grille is integrated into a single frame in white, or your choice of colour on request. Its energy saving heat pump compatible version achieves a reduction of up to 70% in consumption and CO2 emissions (in heat mode).

Advanced Plug&Play control. Includes: Advanced PRO control with LCD display and integrated thermostat, door contact, 7m RJ11 cable and remote control.

Requires MITSUBISHI ELECTRIC VRF Interface KIT adapted for air curtain with expansion valve and programmable control, please consult.

Prepared for connection to MITSUBISHI ELECTRIC VRF (R410A) outdoor heat pump unit (not included), to be purchased by the customer.

On request, the air curtain can be modified to work in cooling and heating (not recommended) with optional condensate water pump.

Air curtain specifications

Model	Airflow m³/h	Fans power 230V-50/60Hz kW	Fans current 230V-50/60Hz A	KIT VRF -	Gas-Liquid pipe connections inch	Noise level (5 m) dB(A)	Weight kg
RDAM ECM 1500 VRF12-ME	2460	0,213	1,86	PAC-AH125M-J	5/8" - 3/8"	57	53
RDAM ECM 2000 VRF16-ME	3280	0,284	2,48	PAC-AH125M-J	5/8" - 3/8"	58	69
RDAM ECM 2000 VRF19-ME	3280	0,284	2,48	PAC-AH250M-J	1" - 3/8"	58	69
RDAM ECM 2500 VRF21-ME	4100	0,355	3,10	PAC-AH250M-J	1" - 3/8"	59	86
RDAM ECM 2500 VRF24-ME	4100	0,355	3,10	PAC-AH250M-J	1" - 1/2"	59	86
RDAM ECG 1000 VRF10-ME	2190	0,213	1,86	PAC-AH125M-J	5/8" - 3/8"	61	50
RDAM ECG 1500 VRF13-ME	2920	0,284	2,48	PAC-AH125M-J	5/8" - 3/8"	62	59
RDAM ECG 1500 VRF15-ME	2920	0,284	2,48	PAC-AH125M-J	5/8" - 3/8"	62	59
RDAM ECG 2000 VRF20-ME	4380	0,426	3,72	PAC-AH250M-J	1" - 3/8"	63	92
RDAM ECG 2000 VRF24-ME	4380	0,426	3,72	PAC-AH250M-J	1" - 1/2"	63	92
RDAM ECG 2500 VRF25-ME	5110	0,497	4,34	PAC-AH250M-J	1" - 1/2"	64	96
RDAM ECG 2500 VRF29-ME	5110	0,497	4,34	PAC-AH250M-J	1" - 1/2"	64	96

(\*) Includes direct expansion valve.

VRF-compatible models are as follows:

- City Multi - Y Series (Heat Pump)
- City Multi - R2 Series (Heat Recovery)

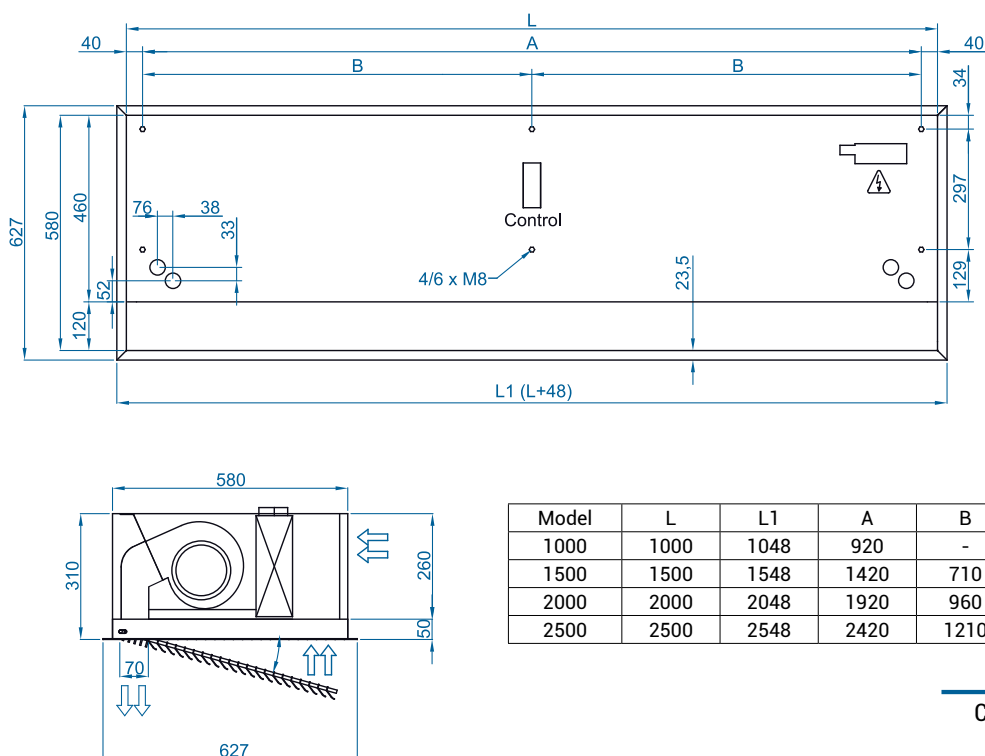
When adverse weather conditions, the outdoor unit capacity can decrease. It is recommendable to oversize the units.



Selection program



## Dimensions



CAD drawings, BIM files, installation manuals and other documents



## Accessories

### Supports



Wall rail support  
SPWR



Silentblock supports  
SPANG-SIL / SLB



Gripple hanger  
SPCT

### Control



ADVANCED PRO  
✓ Included



IR Control  
✓ Included



RJ11 Cable  
✓ Included



CLEVER PRO

### Sensors



Magnetic door contact  
DC  
✓ Included



Mechanical door contact  
DC